

ANNUAL
REPORT
2012



TABLE OF CONTENTS

Message from the Foundation President	3
Scholarships Awarded in 2012.....	4
Scholarship Winners — Student Profiles	5-10
Distinguished Alumni Award Nominations	11
Distinguished Alumni Awards 2012	12-13
Heritage Society	14
Message from the College President	15
Donors 2012	16-17
Profile in Community Philanthropy	18-19
Funds and Scholarships	20
Supporting the Foundation	21
Boards of Directors and Trustees	22
Financial Statement	23

WITH GRATEFUL APPRECIATION TO OUR DONORS

Washington State Community College sincerely appreciates those who generously support our students, our programs, our capital improvements, and our future through the Foundation.

This list of donors on pages 16 and 17 represents gifts made between July 1, 2011, and June 30, 2012. The level of gift, as listed, is based on the actual receipt. Pledges are not included in determining a level. Matching gifts are counted when the matching gift form is received.

Every effort has been made to assure accuracy. Please accept our sincerest apologies and notify us if you have been listed incorrectly or omitted.

740-568-1940

foundation@wscc.edu



The Washington State Community College Foundation is committed to shaping the future and promoting the continuous development of students, faculty, staff, and alumni by providing philanthropic assistance to support the college's mission and objectives and by positively impacting the communities we serve.

© Washington State Community College Foundation 2012

FROM THE FOUNDATION BOARD PRESIDENT

Dear Friends,

The past year has been a rewarding one for the Foundation Board. Through the generosity of our donors, nearly \$250,000 has been turned over to the college for equipment purchases, capital improvements, scholarships, arts and humanities programs, student emergencies and textbooks, and academic programs. Every gift has helped us achieve our goals to support student success and achievement.

With the college's transition from quarters to semesters and the federal changes in how tuition assistance is disbursed, many students felt the financial pinch of tuition costs when they were divided into two terms instead of three terms and, for some, the loss of educational subsidies and access to education loans made the dream of a college education fade.

Fortunately, the Foundation's Student Emergency Fund was able to bridge the gap for seven students facing temporary and unexpected financial hardships, making it possible for them to continue in school and graduate. Notes that the Foundation received from those students clearly indicated how valuable the grants were and how grateful they are to the fund's donors.

The Foundation Board continuously seeks philanthropic support to enhance the success of our students and the future of the college. Each year offers new challenges and opportunities; and each year our donors respond generously with their time, expertise, and resources.

We are grateful for your commitment to the future of our students, the college, and the community. Ultimately, our success depends upon those of you whose support makes a significant difference in the quality of our students' lives, the quality of education the college provides, and the quality of life of the communities in which our students live and work.

Sincerely,



Jeanette E. Hale, Ph.D.
President, Washington State Community College Foundation Board



Cultivating Education Through Philanthropy

SCHOLARSHIPS AWARDED 2012

SCHOLARSHIP

Alpha Rho Gamma Scholarship
AAUW — Marietta Branch Student Scholarship
AAUW — Marietta Branch Student Scholarship
AEP Ohio
Dave and Arlene Archer Family Scholarship
Dave and Arlene Archer Family Scholarship
Ethel and James Archer Scholarship
John Steven Cordray Scholarship
Dominion East Ohio Scholarship
Gretchen S. Feldmaier Memorial Scholarship
Dorothy Fouss Greacen Memorial Scholarship — LPN
Dorothy Fouss Greacen Memorial Scholarship — ADN
J. Ryan Graham Memorial Scholarship
J. Ryan Graham Memorial Scholarship
Louise Eagleson Holmes Business Scholarship
Louise Eagleson Holmes Business Scholarship
Jack G. Ingram Memorial Scholarship
David Klamfoth Manufacturing and Welding Memorial Scholarship
Nine Oaks Scholarship for Appalachian Service and Development
Digital Technology
Nine Oaks Scholarship for Appalachian Service and Development
Agribusiness Management
Deb Patrick Nursing Scholarship
Deb Patrick Nursing Scholarship
Deb Patrick Nursing Scholarship
Peoples Bank High School Scholarship
Peoples Bank High School Scholarship
Peoples Bank High School Scholarship
Peoples Bank High School Scholarship
Anthony J. Popp Memorial Scholarship
Anthony J. Popp Memorial Scholarship
President's Scholarship for Leadership and Development
President's Scholarship for Leadership and Development
St. Luke's Episcopal Church Scholarship
Tina K. Schaad Memorial Scholarship
Nancy Jo Spear Memorial Scholarship
Tri-State Roofing and Sheet Metal Scholarship
Shirley Von Brock Wylie Memorial Scholarship
Lynne Zoller Nursing Scholarship
Zonta Club of Marietta and Environs Student Scholarship
Zonta Club of Marietta and Environs Student Scholarship
Zonta Club of Marietta and Environs Student Scholarship
Zonta Club of Marietta and Environs Student Scholarship
Zonta Club of Marietta and Environs Student Scholarship
Zonta Club of Marietta and Environs Student Scholarship

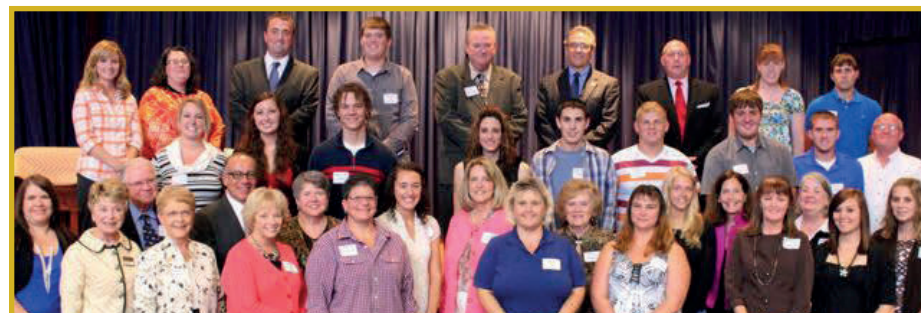
STUDENT

Holly J. Emge
Mary P. Billman
Beverly A. Carpenter
Emily S. Manuel
Matthew L. Downs
Zachary J. Fox
Matthew K. Gandor
Kayla D. Christman
Jana D. Tuten
Travis B. Huck
Regina L. Burkhardt
Megan A. Bilyeu
Emily S. Manuel
Michael A. Robinson
Stacey R. Collins
Loretta L. Day
Lynette M. Seevers
Jared T. Powell

Cassandra K. Coss

Cory L. Sampson
Michelle R. Larimer
Morgan E. Roberts
Jana D. Tuten
Arthur B. Davis
Matthew L. Downs
Kenneth L. Grady
Jeffery D. Metheney
Hunter D. Deem
Kenneth L. Grady
Nicole R. Humphrey
Morgan E. Roberts
Mary P. Billman
Zachary J. Fox
Beth E. Golden
Matthew L. Downs
Kayla M. Lewis
Payden J. Sury
Ashton L. Biehl
Mary P. Billman
Regina L. Burkhardt
Beverly A. Carpenter
Hope M. Stanley
Morgan E. Roberts

SCHOLARSHIP WINNERS — PERSONAL PROFILES



Scholarship winners and sponsors celebrate following the awards presentation. To date, scholarship awards and support to the college through the Foundation approach \$1,000,000.

ASHTON L. BIEHL

Ashton Biehl works part-time at EVE, Inc. as the Shelter Advocate/Service Coordinator and attends class full-time in the Social Services degree program. A coworker noted that her work at the shelter has been a major factor in the agency's continued success in serving victims of domestic violence. She is also a member of Phi Theta Kappa and has earned a 3.24 GPA.

MARY P. BILLMAN

Mary Billman is a non-traditional student, single mother of nine children, grandmother of two, and enrolled full-time in the challenging Medical Laboratory Technology program. Juggling an active family life and a part-time job, Mary continues to maintain a 4.0 GPA in her coursework and has been described by faculty as dedicated, focused, and tenacious. For Mary, the effort is all worth it. One of her primary concerns is to assure a good life for her children and security for the futures of all of them. Regardless of the challenges she faces in achieving her dream of a rewarding career, she is always thoughtful, upbeat, and committed to the task at hand.

MEGAN BILYEU



Megan Bilyeu is a non-traditional student and mother of a small child. Over the years, she has volunteered in numerous community activities such as the Ewing Summer Camp Fundraiser and Ohio University's Rock for Autism. She graduated from Ohio University in June 2010 with a 3.88 GPA and a bachelor's degree in Hearing, Speech, and Language Sciences. A medical condition she had since birth put a stumbling block in the way of her pursuit of a master's degree in Speech Pathology and, when her daughter was born prematurely and had an extensive stay in ICU, she experienced a life changing moment. Megan realized she could use her passion for helping others by becoming a registered nurse. Now she is looking forward to the possibility of obtaining a position in a local hospital and returning to college to become a Nurse Practitioner.

MARY S. BURDETTE*

Mary Burdette, a wife, mother, and non-traditional student, graduated in June 2012 with a Practical Nursing Certificate and is now enrolled in the Associate Degree Nursing program where she has a 3.81 GPA. She is passionate about becoming a nurse and helping others while, at the same time, contributing both to her family's future and the community's.

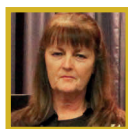
SCHOLARSHIP WINNERS — PERSONAL PROFILES

REGINA BURKHART



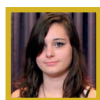
Regina Burkhardt earned a Medical Laboratory Technology degree from Washington State in 1988. She also has a degree in Veterinary Medicine. Today, she is back at Washington State pursuing a Practical Nursing certificate. A non-traditional student with a strong desire to work in the health field, she wants to move away from unemployment and on to a productive future. She feels her background in medicine will help her excel in nursing and offer a stable career.

BEVERLY A. CARPENTER



Beverly Carpenter is a non-traditional student enrolled in the Associate Degree Nursing program where she has earned a 3.79 GPA. The mother of four grown children, she graduated from Washington State in 2005 with an early years education transfer degree, but life intervened and she was unable to pursue a teaching career. Over time, she felt that a career in nursing would provide both the personal satisfaction and financial security she wanted for the future. After mastering the nursing program requisites, she was accepted into the program this past summer. At present, she feels a special connection to working with patients in mental health.

KAYLA CHRISTMAN



Kayla Christman is pursuing a Fine Arts Degree in both Graphic Design and Liberal Arts because, as she states, "I have loved art all of my life." With a 3.83 GPA and a strong desire to make art her lifelong career, she plans to become a graphic designer while doing other art related work to supplement her main income.

STACEY R. COLLINS



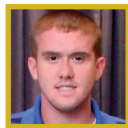
Stacey Collins is a second-year, non-traditional student who works part-time and maintains a 4.0 GPA while enrolled full-time in the rigorous accounting degree program. She chose to enter a business curriculum because she loves dealing with finances and learning how a business grows. She is confident she will enjoy every second of her life in the business world.

CASSANDRA K. COSS



Cassandra Coss is a non-traditional student who graduated last June with a degree in Digital Media and a 3.13 GPA. She has returned to Washington State to continue working toward a degree in Web Programming. Her ultimate goal is to own a non-profit business that helps business owners develop the technology skills they need to succeed and, down the road, to possibly develop a new database system tool.

ARTHUR B. DAVIS



Arthur Davis graduated from Morgan High School with a 3.36 GPA. He is enrolled full-time in the Business Management accounting degree program. He has been very active in 4-H serving as president, vice president, treasurer, and recreation officer. He has served on the Morgan County Junior Fair Board and is known by others to be respectful and hard working with a solid work ethic.

LORETTA M. DAY

Loretta Day is a non-traditional student with a 3.04 GPA enrolled in the Medical Administrative Assistant degree program. She has been employed in several retail enterprises where she developed managerial and people skills. She enjoys working with others and dealing with the public. Loretta lives by the motto: "Give 110%. Go above and beyond what you are asked to do."

SCHOLARSHIP WINNERS — PERSONAL PROFILES

HUNTER D. DEEM



Hunter Deem graduated from Ohio Virtual Academy with a 3.5 GPA, works part-time at Giant Eagle, was a Post Secondary Educational Opportunity Student at Washington State while in high school earning a 3.48 GPA, and is now enrolled full-time in the Liberal Arts Transfer degree program. He plans to go on for a bachelor's degree in science/engineering with the ultimate goal of a master's degree and perhaps a career in robotics.

MATTHEW L. DOWNS



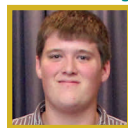
Matthew Downs is a graduate of Morgan High School where he earned a 3.5 GPA. As an Early Enrollment Option student at Washington State, he earned a 4.0 GPA. He is enrolled full-time in the Design Drafting and Mechanical Engineering program because "of his love of drawing and buildings things from any materials available." He plans to use his degree to find a job with a local manufacturing company where he can use his skills designing necessary production pieces.

HOLLY EMGE



Holly Emge is enrolled full-time in the Early Years Education Transfer program, has a 3.65 GPA, and is passionate about her dream of becoming a teacher. In addition to her dedicated involvement with Phi Theta Kappa and its volunteer service to Relay for Life, she has volunteered 100 hours at the Mid-Ohio Valley Humane Society taking care of and walking animals; and she plays piano for patients at the Arbors of Marietta. One who knows her well describes Holly as a person who is collaborative and tries to make others feel valued and included.

ZACHERY J. FOX



Zachery Fox is a graduate of Waterford High School with a 3.89 GPA. He is enrolled full-time in the Electrical Engineering program because of his fascination with electricity and he credits part of his interest in the field to his father, who is an electrician. He was elected president of both the electricity class and Skill USA, was a student ambassador, was involved in the National Technical Honor Society, and was a College Tech Prep Showcase Winner in electronics. His lifelong goal is to become an electrician and work in this area. Those who know him well say he is motivated, academically successful, dedicated, and committed to a future of success through hard work.

MATTHEW GANDOR



Matthew Gandor is enrolled full-time in the challenging Biological Sciences Transfer program where he has a 2.58 GPA. He plans to enroll in a baccalaureate college after graduation. From there he will decide whether to use his four-year degree to enter a career in a health related field or follow his mother's footsteps and become an educator. He says he enjoys seeing people learn and achieve goals that lead to a fuller, richer life.

BETH E. GOLDEN

Beth Golden is a mother and non-traditional student enrolled full-time in the Associate Degree Nursing program with a 3.2 GPA. She has always been drawn to the nursing profession and, although she started a nursing program years ago, life intervened and her plans were put on hold. Today, she is a successful nursing student looking forward to finally achieving her dream.

SCHOLARSHIP WINNERS — PERSONAL PROFILES

KENNETH GRADY



Kenneth Grady graduated from Warren High School with a 3.9 GPA, is enrolled full-time in the Automotive Technology degree program, and works part-time at Hickory Grove. An avid Mr. Fixit, he finds time to enjoy every opportunity to repair automobiles, help his friends and family, and learn about new vehicles. Most of all he looks forward to opening his own business.

TRAVIS HUCK

Travis Huck is currently enrolled full-time at Ohio University. He graduated from Washington State this past spring with a 3.52 GPA and a degree in Criminal Justice-Law. His career goal is to become a juvenile probation officer for the state of Ohio. Those who know him well say he is dedicated, has strength of character, works well with others, and has the demeanor and personality to be successful in his chosen career.

NICOLE R. HUMPHREY



Nicole Humphrey is a full-time student in the Associate Degree Nursing program with a 3.35 GPA. In 2008, she earned a Biological Science Transfer degree from Washington State and in 2009 a Medical Laboratory Technology degree. An active community volunteer, she has participated in fundraising for the Queen Genevieve pageant and with the YMCA's Healthy Kid's Day, Storybook Park, and Relay for Life, to name a few. On campus, she was president of the Medical Laboratory Technology Club and the Science Club. Others have said she is dedicated, responsible, organized, resourceful, and has the positive self-esteem to achieve goals or dreams.

MICHELLE R. LARIMER



Michelle Larimer is a non-traditional, full-time student in the Associate Degree Nursing program with a 3.69 GPA. The single mother of four young children was drawn to the nursing profession when she observed firsthand the vital role nurses played with the complicated birth of her twins. She is known as an intelligent, capable, self-reliant, and self-motivated individual.

KAYLA M. LEWIS



As a small child, Kayla Lewis used to set up a classroom in her bedroom and make her younger brothers play school with her. Today, she is enrolled in the Education-Early Years Transfer degree program and well on her way to having students of her own in a real classroom. With a 3.18 GPA and a strong desire to be the best possible teacher, she looks forward to a rewarding and successful career.

EMILY MANUEL



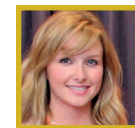
Emily Manuel is enrolled full-time in the Electrical Technology program. She graduated with a 3.84 GPA from Southern High School in Spring 2012 and said she chose Washington State because of its reputation for job placement and because her brother, who graduated from the program in 2006, is now very successful and happy in his career. With a strong background in mathematics and after a lot of serious research, Emily decided a career in electricity was the right match for her. Emily Manuel is ready to begin the next chapter of her life by gaining employment at a power plant. She travels from Racine, OH, to achieve her dream.

SCHOLARSHIP WINNERS — PERSONAL PROFILES

JEFFERY D. METHENEY

Jeffery Metheney is a graduate of Frontier High School with a 3.94 GPA. He is a full-time student in the Electrical Engineering degree program and looks forward to working in the Marietta area after graduation in a position that will help others, be rewarding, and allow him to be a productive member of our society.

LOGAN C. MOORE*

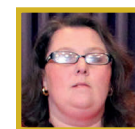


Logan Moore is a wife, the mother of two small children, and a non-traditional student enrolled full-time in the Associate Degree Nursing program - her life's ambition. She has been determined to become a registered nurse for many years. She looks forward to graduation and the career she knows will be rewarding and successful.

TAMMY I. MOORE*

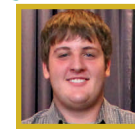
Tammy Moore, a non-traditional student, wife, and mother of a young son, expects to graduate from the Associate Degree Nursing program in May 2013. She earned a Practical Nursing certificate in June 2012, and knew she wanted to go on to become a registered nurse and eventually earn a bachelor's of science degree in nursing. It took her awhile to decide, she said, but she knows this is where she wants to be.

TRISHA R. PARKER*



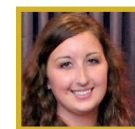
Trisha Parker has wanted to go to school to become a Practical Nurse since 1991, but life's circumstances created hurdles. Now she is enrolled in the Licensed Practical Nursing program and looking forward to a future that offers a rewarding career, the opportunity to help others, and a more secure future for her and her family.

JARED T. POWELL



Jared Powell maintain a 4.0 GPA in the demanding Diesel Technology Systems degree program. From an early age he recalls repairing broken equipment and today does all his own repair work on his tractors and equipment, including modifying existing equipment to fit specific applications and fabricating new equipment. His immediate plan is to work in the diesel repair field and ultimately to own and operate his own mobile truck service operation.

MORGAN E. ROBERTS



Morgan Roberts is a full-time student in the Associate Degree Nursing program on her way to achieving the dream of a career in which she can reach out and help others in multiple ways. She has earned a 3.8 GPA, is a member of Phi Theta Kappa, and devotes precious time to participate in community projects. Her ultimate goal is to one day earn a doctorate degree in nursing so she can become an Advanced Practice Nurse.

MICHAEL A. ROBINSON

Michael Robinson is a graduate of Marietta High School enrolled full-time at Washington State in the challenging Industrial Technologies Power Plant Operator program. He realized early on that to find permanent work, applicants need a college degree. He is committed to gaining the skills necessary to become a successful power plant employee and looks forward to a future working toward a bachelor's degree.

SCHOLARSHIP WINNERS — PERSONAL PROFILES

CORY L. SAMPSON

Cory Sampson works part-time at Huck and Sons Farm Market, volunteers for multiple 4-H events and at the Washington and Barlow fairgrounds, is a member of the Hervida Camp board, and is a full-time student in the Agribusiness Management degree program with a 2.61 GPA. His goal after graduation is to attend Ohio State University to continue his studies in the agribusiness field and eventually to become an employee of Farm Credit Services.

CYNTHIA M. SARGENT*

Cynthia Sargent is a non-traditional student with two small children embarking upon a career change by enrolling full-time in the Associate Degree Nursing program. With an eye to graduating next year, she has a 3.04 GPA. Cynthia wants to stay in the area to raise her children, work as a nurse, and give back to her friends and family.

LYNETTE M. SEEVERS

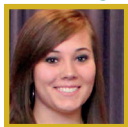


Lynette Seevers is a non-traditional student and a mother who works part-time and is enrolled full-time in the Medical Administrative Assistant program where she has earned a 3.08 GPA. Two important people in her life, her father and a lady with alzheimer's for whom she provides care, strongly impacted her decision to return to school to work in a health related field. She is a family oriented, capable, and self-motivated person with a sense of humor.

HOPE M. STANLEY

Hope Stanley works part-time and is enrolled full-time in the demanding Radiologic Technology program with a 3.76 GPA. Hard working and self-motivated, she is determined to graduate from the program and work successfully in the field. Those who know her well are confident that, with her attitude, character, and desire to succeed, she will make the college proud.

PAYDEN J. SURY



Payden Sury has wanted to become a registered nurse since she was a young child. Helping others is a priority in her life and she feels a sense of accomplishment and joy when caring for others. She is enrolled full-time in the Associate Degree Nursing program with several classes completed and a 3.64 GPA. She looks forward to graduation and a successful career.

JANA D. TUTEN

Jana Tuten holds an Associate of Arts degree, a degree in Business Administration Transfer, and a Licensed Practical Nurse certificate, all from Washington State, as well as a bachelor's degree in accounting from Marietta College. She is now enrolled full-time in the Associated Degree Nursing program, has a 3.25 GPA, and works part-time to pursue her passion to become a registered nurse. Currently caring for a hospice patient, she is certain she has found the right career path for her. Others have described her as professional, compassionate, focused, and enthusiastic.

* Denotes recipient of Washington County Department of Jobs and Family Services Scholarship, which is managed by the Foundation for WSCC students.



"We are what we repeatedly do...
Excellence is not an act but a habit."
— Aristotle

2013 DISTINGUISHED ALUMNI AWARD

Two Distinguished Alumni Awards are offered annually for exceptional achievement in a chosen field or in volunteerism/service to the community. Nomination forms are available on the college web site (www.wscc.edu), by email at foundation@wscc.edu, or by telephone (740-568-1940). Everyone is invited to submit nominations.

The 2013 deadline for nominations is March 13th. Nominations may be submitted to:

Washington State Community College Foundation
c/o Laurene Huffman
710 Colegate Drive
Marietta, OH 45750

Distinguished Alumni Award winners are determined by how well they exhibit the qualities of community and professional leadership that are symbolic of the goals and objectives of Washington State Community College.

Distinguished alumni:

- Enhance and promote excellence in self and others
- Create an environment that inspires others to reach their potential
- Promote continuous improvement and lifelong learning
- Enrich the lives of others through community service
- Acknowledge and cultivate social and cultural diversity

Award winners are selected by the Distinguished Alumni Award Committee composed of past Distinguished Alumni Award winners, alumni, and community members.

Washington State Community College Distinguished Alumni

Jonathan D. Graziani '00

2007 Distinguished Alumnus for Outstanding Professional Achievement

Louise Eagleson Holmes '77

2008 Distinguished Alumna for Outstanding Community Service

Andrew J. Strauss '96

2008 Distinguished Alumnus for Outstanding Professional Achievement

Debra D. Hendershot '88

2009 Distinguished Alumna for Outstanding Professional Achievement

John A. Walsh '84

2009 Distinguished Alumnus for Outstanding Community Service

David N. Pickering, D.O. '92

2010 Distinguished Alumnus for Outstanding Professional Achievement

Carissa M. Anderson '00

2011 Distinguished Alumna for Outstanding Professional Achievement

Christopher D. Penrose '85

2012 Distinguished Alumnus for Outstanding Professional Achievement

William L. Standish '98

2012 Distinguished Alumnus for Outstanding Community Service

2012 DISTINGUISHED ALUMNUS

Christopher D. Penrose '85 Outstanding Professional Achievement

The 2012 Distinguished Alumnus for Outstanding Professional Achievement, Christopher D. Penrose '85, exhibits the qualities of exemplary professional leadership, commitment, and personal growth that are hallmarks of Washington State Community College. A man known for his dedication and vision, he has made significant contributions to the national and global agricultural community. He is also known for his dignity, integrity, and humanity in dealing with others.

A 1985 graduate of Washington Technical College with an Associate of Applied Arts degree in Agriculture, he went on to earn a Bachelor of Science degree in Animal Science in 1988 and then a Master of Science degree in Agricultural Economics and Agronomy in 1991 from Ohio State University. He has been the Cooperative Extension Agent in Morgan County since 1998.

Born in Dayton, Ohio, he spent his summers in Morgan County on the family farm, which was purchased in 1825 from the Federal government. He moved permanently to the farm in 1981 where he, his wife, and two sons still live.

He has dedicated his life to the improvement and maintenance of a healthy and productive agricultural environment and to the success of those dedicated to agriculture. He is a member of numerous local, state, national, and international agriculture related boards, has written more than 300 bulletins, journal articles, reviews, abstracts, and magazine and newspaper articles on agriculture, dairy, animal husbandry, and sustainable agriculture research. He has made presentations relating to agricultural issues, advancements, and practices across the United States and in Brazil, Australia, New Zealand, and Canada. The winner of more than 20 honors and awards for excellence in supporting and furthering initiatives for agricultural improvements and excellence, he still finds time to be a guest lecturer at Washington State's Agribusiness Management program classes and to serve as a member of the Agribusiness Management Advisory Committee at the college.



2012 DISTINGUISHED ALUMNUS

William L. Standish '98 Outstanding Community Service

The 2012 Distinguished Alumnus for Outstanding Community Service, William (Bill) L. Standish '98, has spent a lifetime of exemplary community leadership, concern for the quality of life of others, and promotion of social and cultural enrichment. He continues to demonstrate an enthusiasm and dedication to community service that is frequently marked by personal kindnesses to benefit others that more often than not go unpublished.

A 1972 Business Administration graduate of Bliss Business College in Columbus, Ohio, he was employed at American Electric Power for 18 years and eventually relocated to the Marietta area where, in 1996 he enrolled in Washington State's Business Management program. After graduating in the spring of 1998 with an associate's degree, he began his banking career at Advantage Bank, where he remained for 15 years until retirement in 2009.

He has held many leadership positions in various community groups and activities in the area, including board seats, chairmanships, and start-up coordinator positions. He has been praised by those who know him best as having "...a real servant's attitude toward his community and those around him." He is a leader who "leads by example and service", is "competent and valuable during crucial times", and is a "selfless volunteer."

Bill has logged many hours in community service helping youth, the community, the hungry, and his church. He served 11 years with the Marietta High School Band Boosters; 8 years on the Washington County Red Cross Board; and 12 years as a member, Club President, and Board President of the Marietta Noon Lions. Bill has also served through Marietta Civitan, Marietta Traffic Commission Board, Harvest of Hope, Christ United Methodist Church, and The Right Path.



HERITAGE SOCIETY — LEGACY GIFT HONOR ROLL

Personal Legacies — Philanthropy for the Future

The Heritage Society recognizes those who have generously supported the future of Washington State Community College through a Planned Gift.

Our Honor Roll of Heritage Society members includes:

Harold J. Copen
Daniel K. Graham & Family*
John F. Greacen*
Louise E. Holmes*
Thomas Steckel, Ph.D.*

For many, deferred gifts and bequests are attractive options in planning long-term financial and retirement programs that not only enhance the lives of the donors and their beneficiaries but also positively influence and shape the futures of their charities of choice.

Giving opportunities and options are varied and may be tailored to suit the desires and objectives of individual benefactors. Gifts may be designated for a specific purpose, or may be given without restrictions. In addition to knowing that your gift will be appreciated and have a positive impact upon the future of the college, income tax deductions and capital gains exemptions are just two of the possible additional benefits.

If you have already included Washington State Community College in your plans, we welcome you as a member and ask that you let us know of your intentions. In that way, you not only help us with future planning, but also allow us the opportunity to thank you properly.

Donors of charitable gifts are urged to consult a financial professional or attorney to explore the ways in which a gift made in their lifetime may be advantageous not only to them and to their heirs, but also to Washington State Community College.

Those considering a gift to the Foundation may do so in the name of "The Washington State Community College Foundation."

Additional information, in confidence, is available through the Executive Director:

Washington State Community College Foundation
710 Colegate Drive
Marietta, OH 45750
740/568-1940
foundation@wscc.edu

*Charter Member



Cultivating Education Through Philanthropy

MESSAGE FROM THE COLLEGE PRESIDENT

Dear Friends,

The entire college community is grateful for the continued generosity of our donors and their commitment to our future as well as our present.

After a year as president of Washington State Community College, I am confident we are moving positively into the future overcoming any obstacles that may fall in our way and becoming an even stronger, more resilient, and more responsive educational institution and community member.

Faculty and staff have updated the college's mission, vision, and values; established strong departmental and institutional goals and objectives to enhance our commitment to student success; and moved forward on a positive path in spite of a hard look at budgetary constraints.

The college has created a new, phased campus master plan that, when completed, will enhance student services, update current facilities, provide student study and congregating areas, brighten the halls, and create space for health and wellness activities. We look forward to sharing our ideas with you as they unfold.

My commitment to our donors is stronger than ever. You are always welcome to call or visit to share your views and ideas for the college, and I will always be cognizant of your suggestions as we move forward. Washington State Community College is a vital and active member of the community. We care about our students and their success, our community and its success, and the future of the college's commitment to southeastern Ohio.

With warm regard,

Bradley J. Ebersole, Ph.D.
President, Washington State Community College



DONORS BY GIVING LEVEL

BENEFACTOR'S CIRCLE

Dave & Arlene Archer

ANNIVERSARY CLUB

Schwendeman Agency, Inc.

SCHOLAR'S CLUB

Anonymous
 AdvantageBank
 Glenwood Retirement Community
 Louise Eagleson Holmes '77
 Ohio Farm Bureau Foundation
 Peoples Bank, NA
 Zonta Club of Marietta

PATRON

American Lubricants & Chemicals, LLC
 Brad & Gail Ebersole
 Steven J. Feldmaier
 John F. Greacen, Jr.
 Jack & Mary Haessly
 Glen & Dr. Jeanette E. Hale
 Megan L. Krichenia
 Marietta College
 Brad E. Merritt,
 Ohio Arts Council
 Ohio River Border Initiative
 The Rev. Faith C. Perrizo
 Darren L. Pitchford
 Peter Polites & Virginia K. Mayle
 Tri-State Roofing & Sheet Metal Co.

ASSOCIATE

Anonymous
 B & W Pharmacy, Inc.
 Joe & Judy Baker
 James H. Barengo
 Randy & Nancy Barengo
 Belpre Dental Solutions
 JD Byrider
 Billy & Kimberly Blackburn
 Daniel K. Blake
 Blauvelt Sign Company
 Walter & Suzanne Brothers
 Sallye Bom
 Judith A. Bonnett
 Susan E. Boyer
 Dr. Michael & Mrs. Amy Brockett
 Shoshanna M. Brooker
 Jerry & Mary Katherine Buckley
 Harry & Ann Cogswell
 David & Ann Conrath
 Dale & Jane Cox
 Holly A. Dexter
 Diane Dudzinski, Ph.D.
 Gary Dye
 Gregg & Ann Emrick
 The Eye MDs: George, Strickler & Lazer, PLLC
 Farm Credit Services of Mid-America
 Fenton Foundation, Inc.
 Galley Enterprises, Inc.

Laura Garcia
 Carol & Gary Gaughan
 Dr. Jay Gerber
 Gold Line Jewelers
 Tom & Amy Hockenbrocht
 Greenleaf Landscapes, Inc.
 Green Valley Co-op, Inc.
 David & Leslie Haas
 Haessly Hardwood Lumber Company
 Sondra Holbert
 Larry & Sheryl Holdren
 Robert & Karen Holland
 Robert & Alberta Huck
 Mike & Joyce Iaderosa
 Jo Ann Ingram
 James & Sandra Irvin
 Tim & Jane Irvine
 Jim & Martha Jackson
 Mollie Jarrell
 Georgene T. Johnson
 Warren & Georgene Johnson
 Paula R. Johnson
 Rob Kinker, Ph.D.
 Richard & Rita Kipp
 Brenda L. Kornmiller
 Karl & Karen Kumpf
 John M. Lanham
 John & Pauline Lee
 Connie L. Legraen '83
 R. John Lehman
 Edward & Gretchen Long
 Doug '74 & Becky Mallett
 Marietta Community Foundation
 Marietta Occupational Health Partners
 Marietta/Washington Co. CVB
 Theresa Z. Marlow
 William & Roxanne Marshall
 MattressMax
 Memorial Health Systems
 Microbac Laboratories, Inc.
 Dr. & Mrs. Carson K. Miller
 Jaclyn L. Miner
 Deborah & Robert Misel
 David & Tamara Montgomery
 Wayne E. Morris '94
 Margaret (Betsy) Murray
 Stefanie Nelson
 Alf & Dell Nicholas
 Allan & Carol Norris
 Mark & Terry Nutter
 O.E.A. Affiliate - WCCC
 Ohio Valley Eye Physicians and Surgeons
 Michael H. Palmer '94
 Deborah Patrick
 Roger & Mary Patterson
 Daniel & Louise Pennock
 Richard A. Peoples
 Peoples Bancorp Foundation
 Judith Z. Phillips
 Putnam Chocolates
 Mike & Cindy Pyles

Gail A. Reynolds
 Paul E. Richards
 Rowland Motors, Inc.
 Kimberly Salyers
 Settlers Bank
 Ken & Janet Schilling
 Mary S. Shook
 Skuttle Indoor Air Quality Products
 Solvay Advanced Polymers, LLC
 Bill & Dee Standish
 Kara Stauffer
 Tom Steckel, Ph.D.
 Ann C. Stewart
 Gladys Stokes
 Penelope D. Stokes-Hall
 Teri Ann's, Inc.
 Theisen Brock
 Trademark Solutions
 Larry & Chris Unroe
 Dixie Vaughan, Ph.D.
 Judith Thompson Verdi
 Suzanne H. Walters
 David & Joan Washburn
 WCCC-O. E. A. Affiliate
 Washington County Farm Bureau
 Washington Electric Cooperative, Inc.
 WCCC Respiratory Therapy Club
 WCCC Support Staff Senate
 Tom & Margaret Webster
 Paul S. Wells
 Orman Q. Whited
 Tanya S. Wilder
 Julia Will
 Gary & MaryAnne Williams
 Jack & Betty Lou Wilson

FRIENDS

Jan Adams
 Amanda Allman
 Ines Allen
 Carissa Anderson '00
 Sam Anderson
 Anonymous
 Sharon Morehead Apgar
 Linda D. Arnold '74
 Judy Atkins
 Cynthia L. Auken
 Edward Bagley
 Kathleen Baker
 Arlene N. Balfour
 Barking Dog Books & Art
 Kelley J. Bartlett
 Teresa G. Beach
 Lynn Ann Beardmore
 Mark & Amy Beardmore
 Susan Berry
 Delmar Biehl
 James C. Brown
 Brenda Brum
 Joanna M. Burt '99
 Kelly Cale
 Sara R. Camacho
 Amy Careins

DONORS BY GIVING LEVEL

Shirley Carna
 Nicole Cuthbertson
 Steve Deem
 Jennifer Dennis
 Brent DeWees
 Robert & Lydia Donnelly
 Lacey L. Dotson
 Jonathon Duck
 Joseph '06 & Patricia Duckworth
 Gregory & Jennifer Eaton
 Jayla Eddy
 Linda Eddy
 Diana L. Eesley
 Robert & Ginny Ferguson
 Donna M. Ferraro
 Carol Fusco
 Terrie Gabbert
 Mary Gardner
 Aaron & Lynn Graham
 Michelle D. Groszklos
 Stuart Halkett
 Carole Wiley Hancock, Ph.D.
 Stephanie Hardie
 Judith S. Harkness
 Robert Harris
 Larry & Debra '88 Hendershot
 Erin Hendrickson
 Cissy Henry
 Brandon & Amanda Herb
 Anna Marcel De Hermanas
 Jamie Heydinger
 Sherry Hill
 Georgaleen Hockenberry
 Hannah M. Holland
 Arthur G. Hollandsworth
 Laurene Huffman
 Pamela Jackson
 Ashley Jones
 Ginny Jones
 Theresa Kaelin
 Roger & Betsy '97 Kalter
 Mark & Heather Kincaid
 Karl & Sarah Klemm
 Lois Krafft
 Michael Krichten
 Tiffany Laiply
 Andrew & Chaya Lamoreaux
 Lois A. Lankford
 John Lankham
 Margaret Lanning
 Jeff Larsen
 Darlene S. Leonhart
 Marilyn Ann Logue
 Janice '71 & Kenneth Long
 Lindsey Lucas
 Jennifer McCabe
 McAlarney Pools, Spas & Billiards
 Cheryl McAlarney
 Frank & Carol McAuley
 Justin McElroy
 Matt & Holly Menzel
 Margaret, Maggie, & Steve Meyer
 Jenice Miller

Andrew Minx & Kayla Dowler
 Dr. Larry & Mary Lou Moegling
 George Molden
 George R. Moore
 Moran Construction, Inc.
 Meredith Morgan
 Miriam & Junior Murrell
 Rose C. Nardi
 Jean R. Nuss
 Tracey O'Dell
 Scott Offenberger
 Tonia G. Omspach
 Susan S. Parsons
 Joy L. Peck
 Aimee J. Phillips
 Evelyn Pitasky
 Robert & Carole Poling
 Penelope L. Polomik
 Karen Poorman
 Davis & Jennifer Powers
 Peter & Karen Prigge
 Rebecca Putnam
 Jarod & Amanda Reebeel
 Tom Reed
 John & Andrea Richardson
 Pamela S. Roberts
 Betty Jo Rode
 Cynthia M. Rogers '96
 Roger & Diane Rush
 Elizabeth & Allen Ruth
 Cheryl A. Sauls
 Evan & Heather Schaad
 Schafer Leather Store, LLC
 David Scheimann
 William Sears
 Terasa J. Seeber '95
 Allan & Mary Segrest
 Cathy S. Smith '86
 Kayla Smith
 Tiffany Smith
 Damien & Aude Soller
 Judith K. Spindler
 Tim & Amy Stanley
 Dr. Jason H. & Dyani Stengel
 Charlene Stephan
 George & Eleanor Stokes
 Jamey A. Styer
 Paula L. Styer
 Dustin D. Taylor
 Rosemarie E. Thomas
 Michal Thompson
 Patricia A. Thrash
 Kenny & Linda '06 Tilton
 Scott & Alyson Tornes
 Darrin Treadway
 Faye Treadway
 Judith Turner & Wayne Kelley
 Tamara S. Tuten
 Rebecca Utt
 Howard W. & Mary Alice Varner
 Kenneth R. Vigneron
 Earl & Charlotte Wagner
 Keith & Carol Ware

Wallace Marital Trust
 WSCC-AgriLab
 WSCC Professional Senate
 Carol S. Wharff
 Alicia Warren
 Mike & Tammy Whitnoble
 Rebecca Williamson
 Sandra R. Wilson
 Frank E. Young
 Peter Young
 Patricia Zakowski
 Diane Zimmerman

GIFTS IN MEMORIAM FOR:

Connie M. Brant
 Gretchen S. Feldmaier
 Robert C. Fischer
 Ralph Tepe

ADVERTISERS: EVERGREEN ARTS & HUMANITIES SERIES

Blauvelt Sign Company
 Marietta Community Foundation
 MattressMax
 Putnam Chocolate
 Mary Shook
 Theisen Brock

GRANTS

Marietta Community Foundation
 Ohio Arts Council
 Ohio River Border Initiative

GIFTS-IN-KIND

Teresa G. Beach
 Sara R. Camacho
 Jean Cech
 Chef Kathy
 Rose Church
 Evergreen Child Development Center
 Sally Hale
 Cissy Henry
 Beverly Hinton
 Adelyn Hirschi
 Lisa L. Huck
 Amy Huff
 Georgene Timko Johnson
 Pauline Knoch
 Connie Legraen
 Deborah K. Misel
 Mike Morrison
 Rebecca Putnam
 Pam Roberts
 Cindy Rogers
 Cheryl A. Sauls
 Terry Seeber
 Courtney Singer
 Tom Steckel
 Susan Strauss
 WSCC Marketing Department



Dr. Jeanette Hale, President of the WSCC Foundation Board; Dr. Bradley Ebersole, WSCC President; Alicia Warren, Program Director of Practical Nursing; Dr. Dixie Vaughan, Dean of Health Sciences; John Greacen, donor and Foundation Board member; Darla Boone, Program Director of Associate Degree Nursing; and Michael Mullen, former Mayor of Marietta.

Donor Enhances Health Sciences Technology

Former Board of Trustees member and current Washington State Community College Foundation Board member John Greacen gave health sciences students an educational and experiential boost with his generous gift of an iStan human-patient simulator for a newly remodeled nursing lab, which simulates a hospital patient room.

The new lab was named the Dorothy Fouss Greacen Memorial Human Simulation Lab in memory of Mr. Greacen's wife, who started her career as a nurse in the U.S. Cadet Nurse Corp in 1943, became a registered nurse in 1946, and was a private duty nurse for many years in Marietta.

Mr. Greacen is a long-time supporter of the Health Sciences. In 1999, he established an endowed memorial scholarship in his wife's name to provide full tuition scholarships each year to a Practical Nursing student and an Associate Degree Nursing student.

Dean of Health Sciences Dr. Dixie Vaughan noted the advantages of a wireless patient simulator for nursing students.

"Students struggle with the mastery of critical thinking skills, which are essential to their academic success," she said. "Utilizing iStan is one way that we can empower our students and bring more realism to the nursing lab setting. It also enhances the students' hands-on patient experiences in their clinical classes."

Mr. Greacen was invited to see iStan the moment it arrived on campus. "It's fantastic," he exclaimed. "He looks, feels, and acts like a human being. He even groans and snores."



iStan in the Dorothy Fouss Greacen Memorial Human Simulation Lab

This is a wonderful opportunity for students to learn without worrying about making a mistake on a live person. I'm really happy for the students."

A human simulator allows realistic training from basic skills to advanced life-saving skills. By using iStan, students address life-like health issue scenarios without risk to human patients.

Mr. Greacen's generous gift of more than \$94,000 further enhances the quality of health science education at Washington State.

Greacen Gift Creates State-of-the-Art Teaching Room

During a year of incredible generosity, John Greacen, once again stepped forward to help the college combine and renovate two small classrooms in the Arts and Sciences Center in order to create a modern, high-tech classroom for students, faculty and staff, and community organizations.

In addition to creating a learning environment that is comfortable and holds up to sixty-four students, the new state-of-the-art classroom is loaded with high-tech devices, such as an interactive Smart Board, overhead projector with a document camera, lecture-capture equipment, and 50-inch monitor screens strategically placed so everyone in the room can follow lectures and presentations. The room also is equipped with wireless internet access and a sound support system.

The classroom offers a multitude of teaching and learning functionalities and encourages faculty-student interaction. Seating is arranged in semicircles of tables and chairs which can easily be moved for small group instruction, study groups, or project work areas. For faculty or meeting leaders, the new classroom includes two 52-inch LED televisions, a master control podium with a touch screen annotation monitor for presenter use, a document camera with zoom in-zoom out capabilities, a full standard PC, a high-definition Blu-Ray player, wired and wireless microphones connected to the ceiling speakers, and guest device connectivity. Ceiling speakers provide all the audio needs in the room.

The project has been a dream for some time. At the dedication ceremony in October 2011, Board of Trustees Chairman Ken Schilling thanked Mr. Greacen for making the open, acoustically pleasing, and technologically up-dated classroom possible. The Board of Trustees now holds its meetings in the room allowing more room for the public.

College President Dr. Bradley J. Ebersole thanked John for his dedication to the college, for his generosity over the years in making possible the purchase of educational equipment, renovations, and capital improvements that the college could not otherwise afford. Mr. Greacen's gift of more than one-half of the \$95,000 renovation cost will positively enhance the learning experiences of students and visitors alike for decades to come.



Ken Schilling, Chairman of the Board of Trustees; John Greacen, donor; and Dr. Bradley J. Ebersole, College President at the dedication of the high-tech classroom

FOUNDATION FUNDS AND SCHOLARSHIPS

Foundation donors who wish to support student and institutional needs on an ongoing basis establish funds to serve specific goals. Gifts to these funds, as well as unrestricted gifts, may be made by contacting the Foundation.

Agribusiness Management Program Fund
Associate Degree Nursing Program Enhancement Fund
Automotive & Diesel Trucks Department Fund
Carson K. Miller Library Enhancement Fund
Chemical Operator Online Certificate Fund
Connie Brant Memorial Fund
Evergreen Arts & Humanities Fund
Evergreen Child Development Center Fund
Faculty/Staff Endowment Fund
Ora Elizabeth Vadakin Memorial Practical Nursing Program Fund
Phi Theta Kappa (Alpha Rho Gamma Chapter) Student Assistance Fund
Outreach, Access & Success Programs Fund
Physical Therapist Assistant Program Student Assistance Fund
President's Innovation Fund
Robert C. Fischer Memorial Fund
Senior Student Educational Fund
Student Travel Fund
Unrestricted Fund
Washington State Community College Alumni Association
Washington State Community College Biological Sciences Fund
Washington State Community College Memorial Fund

Scholarship opportunities are available to Washington State students who inquire through the Foundation Office. Scholarship descriptions and applications are available online and at various locations on campus.

AEP Ohio Scholarship
Agribusiness Management Scholarship
Alpha Rho Gamma Scholarship
Amazon Chapter #30, Order of the Eastern Star Scholarship
American Association of University Women – Marietta Branch Student Scholarship
American Society of Metals Scholarship
The Dave and Arlene Archer Family Scholarship
The Ethel and James Archer Scholarship
Business Management & Technology Scholarship
The John Steven Cordray Scholarship
Dominion East Ohio Scholarship
Gretchen S. Feldmaier Memorial Scholarship
J. Ryan Graham Memorial Scholarship
Dorothy Fouss Greacen Memorial Scholarship – LPN
Dorothy Fouss Greacen Memorial Scholarship – ADN
Jeanette Ellis Hale Educational Scholarship
Louise Eagleson Holmes Business Scholarship
Jack G. Ingram Memorial Scholarship
Instrumentation Society of America Scholarship *
David Klamfoth Manufacturing and Welding Memorial Scholarship
Nine Oaks Scholarship for Appalachian Service and Development Digital Technology Scholarship
Nine Oaks Scholarship for Appalachian Service and Development Agribusiness Management Scholarship
Deb Patrick Nursing Scholarship
Peoples Bank High School Scholarship
Anthony J. Popp Memorial Scholarship
President's Scholarship for Leadership and Development *
St. Luke's Episcopal Church Scholarship
Tina K. Schaad Memorial Scholarship
Nancy Jo Spear Memorial Nursing Scholarship
Tri-State Roofing and Sheet Metal Scholarship *
Upward Bound Parent Association Scholarship
Shirley Von Brock Wylie Memorial Scholarship
The Lynne Zoller Nursing Scholarship
Zonta Club of Marietta Student Scholarship
Washington County Department of Job and Family Services Grant-in-Aid Scholarship
(Managed by the Foundation for WSCC students.)

* Denotes new scholarship

SUPPORTING THE COLLEGE AND ITS STUDENTS

Giving Options — Giving Opportunities

Gifts to Washington State Community College Foundation, regardless of size, benefit our students, the college, and ultimately the communities in which our students live and work. Every gift is significant because every gift helps to promote quality education, a skilled workforce, and a future of growth and success in southeastern Ohio.

Collectively, donor gifts help to sustain the present and secure the future for the college and for all those who want to improve their lives and the lives of their families.

Outright gifts often include gifts of cash, securities, or property for which the donor receives tax advantages. For example, in the case of gifts of appreciated securities, the donor is entitled to a charitable income tax deduction based upon the fair market value of the securities, and capital gains taxes are avoided.

Deferred gifts involve the irrevocable transfer of an asset to a charitable organization. The donor may retain either an income stream or the remainder interest. Current tax laws permit several planning alternatives for deferred gifts allowing the donor to receive a charitable income, gift, or estate tax deduction. These planned giving options include Charitable Remainder Trusts, Charitable Lead Trusts, Life Insurance, and others.

Bequests are gifts made to a charity as a named beneficiary in the donor's will or trust, and may provide for an outright or a split-interest gift. The donor's estate may receive an estate tax deduction for the value of the gift.

Employer Matching Gift Programs: Many employers have matching gift programs that match their employees' gifts of cash or appreciated securities, adding additional support in the name of the donor. When a donor gives a gift to a charity, he or she notifies the Human Resources department of the gift and completes the employer's matching gift form.

Donors are encouraged to discuss their planned gift and major gift plans for a charity with their attorney or financial planner.

What donor gifts accomplish:

- Defray the cost of education for those who need financial assistance to build a future for themselves and their families.
- Provide new facilities & educational equipment through institutional capital improvement.
- Provide leadership training and educational travel opportunities for students and faculty alike.
- Secure the college's future through deferred gifts.
- Support campus arts and cultural events provided to the community without charge.
- Keep at-risk students in college.



**Cultivating Education
Through Philanthropy**



**"The best use of one's life is to invest it in something that will
outlast that life."**

— William James

BOARDS AS OF JUNE 30, 2012

Washington State Community College Foundation Board

Jeanette E. Hale, Ph.D.
President

Kimberly D. Salyers
Vice President

Peter Polites, CPA, Retired
Treasurer

Megan L. Krivchenia
Secretary

Randall T. Barengo*

Michael K. Brockett, M.D.

Bradley J. Ebersole, Ph.D.*

Gregg M. Emrick, Esq.

John F. Greacen

Sondra L. Holbert '05

Louise E. Holmes '77

Cynthia A. Pyles

Gail A. Reynolds
Executive Director

Timothy J. Stanley**

*ex-officio

** Student Representative

Washington State Community College Trustees

Kenneth J. Schilling
Chairman

Larry E. Holdren
Vice Chairman

Randall T. Barengo
Shoshanna M. Brooker

Holly Anne Dexter

R. John Lehman

Daniel J. Pennock

Davis K. Powers

Larry J. Unroe

FINANCIAL STATEMENT AS OF JUNE 30, 2012

Operating Revenues

Grants & Contracts	<u>\$88,151</u>
--------------------	-----------------

Operating Expenses

Instructional	1,434
---------------	-------

Institutional Support	214,064
-----------------------	---------

Scholarships	<u>39,464</u>
--------------	---------------

Total Operating Expense	<u>254,962</u>
-------------------------	----------------

Operating Income (loss)	<u>(166,811)</u>
-------------------------	------------------

Non-Operating Revenues (Expenses)

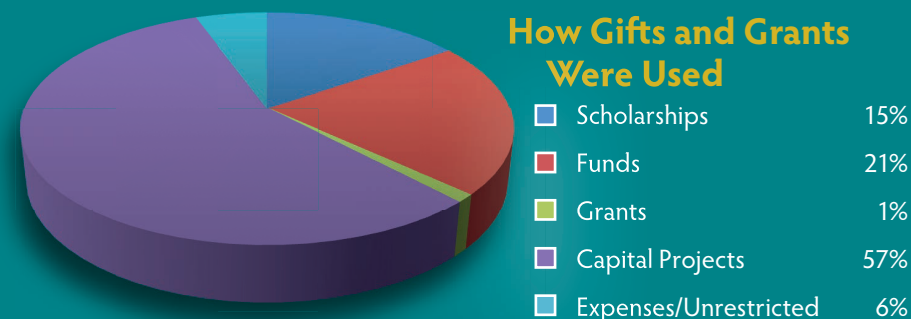
Investment Income	8,965
-------------------	-------

Increase (decrease) in Net Assets	<u>(157,846)</u>
-----------------------------------	------------------

Net Assets

Beginning of Year	813,980
-------------------	---------

End of Year	<u><u>\$656,134</u></u>
-------------	-------------------------



**Cultivating Education
Through Philanthropy**

* July 1, 2011 through June 30, 2012

A copy of the audited financial statement is available at Washington State Community College Foundation, 710 Colegate Drive, Marietta, OH 45750 • foundation@wscc.edu • 740-568-1940



**SUPPORT
SUSTAIN
SUCCEED**



**Washington State
Community College
Foundation**

**710 Colegate Drive
Marietta, OH 45750
740-568-1940**

foundation@wscc.edu